



# grenfell preschool & long day care centre



## School Photos

We were so lucky on photo day as the rain and wind held off until the photos were taken. The girls from PhotoTeck do such a wonderful job and have phoned to say the photos are in print and could be back as soon as 2 weeks. Thank you all for being very understanding when having to wait so long to have the children's photos taken.



## Lunch Boxes

As a parent, I understand how busy you all get and how easy it is to pack pre-packaged food when sending your children off to day-care or school. There are many children bringing food to the centre that is full of sugar and not healthy. We like to encourage healthy eating and we ask you to look at what is in some of the pre-packaged food to determine how healthy it is. Look at the sugar content and artificial flavouring to help you decide.



## End of year Closure

A reminder to all families that the centre will be closed for 2 weeks. The last day will be 23<sup>rd</sup> December at 6pm and we reopen on Monday 9<sup>th</sup> January at 8am. A reminder that all fees need to be paid in full by the end of closure this year. If you wish to change your enrolment days for next year there will need to be 2 weeks' notice given. The children going off to school in 2012 and not returning to the centre will also need to give notice

## Enrolments for 2012

We are calling for enrolments for 2012. To help us with enrolment please let people know about our centre and preschool as well as our Weddin Mobile Preschool Service. When going to school for the very first time it can be over welling and sending your child to preschool helps them prepare



## Child Safety

Kid safe NSW is dedicated to reducing the number and severity of unintentional child injuries through promoting child safety. There are a number of elements that can contribute to the safety of your child. These include:

Unsafe environmental conditions - for example, access to dangerous items or situations that are inappropriate to the child's understanding and stage of development. Get down to your child's level and have a look around to see from their perspective.

Participation in activities that is not consistent with the Child's abilities and development - for example, using a pair of scissors when they are not aware of the dangers involved.

Lack of adult supervision - where parents / carer over-estimate the child's abilities to cope in different situations or environments or underestimate the potential for dangers in various situations and environments to children.

**. Remember - No mechanism or gadget can replace parental supervision to provide a safer environment for children. At the end of the day, a product is only designed to be a product, not a child-minding substitute.**



## Parent /teacher interviews

Monday 5<sup>th</sup> Dec until 9th December. If you would like to have an interview please place your name on the list that is in the sign on/off books for each room.

## Grenfell Record

Did you all read the Grenfell Record? Did you see all the photos of your children and their Art Show? If you missed it, you can view it at the centre in the Foyer. I am sure if you need to purchase one you could go and see Peter at the Grenfell Record?

## Hats and Singlet tops

It is important that children wear a hat while playing outside. We are running out of spare hats again and ask you to send a hat with your child. If you have one of our spare hats at home, could you please return them? Our clothing Policy also states no singlet tops or sleeveless dresses



## End of the year celebrations

Do not forget the end of the year celebrations at the Bowling Club on the 14<sup>th</sup> December 2011. There will be a free sausage sizzle starting at 5pm followed by a concert and graduation at 6.30pm

To assist us with catering and seating arrangements we need to know how many people will be attending. A list will be at the office and the three playrooms for you to add your name and numbers of sausages required.

We look forward to you all coming and enjoying a sausage and seeing the children perform in the concert.



For the children going off to school in 2012 there will be a graduation ceremony just after the concert so please try to see that your child is there to enjoy the moment with their friends and to receive their portfolio. Bring your camera to capture that priceless photo of them in their caps and gowns.



Santa will be at the club from 5pm to 6.00pm and you can have a photo taken and printed for \$2.

It is always a fun evening so bring your family and friends along and enjoy the evening.

## PURPLE DUST THE BODY SHOP BEC MADE IT JEWELLERY AND TUPPERWARE

Are joining forces again and you are invited to join them  
Sunday 4th December 2011

11am to 3pm

11 South Street Grenfell

For further information & to rsvp contact

Rowena on 6343 2913

Rita on 6343 2459

RSVP: By 3rd December 2011

Please let me know if you can come  
and be sure to bring a friend

## Carols in the Park

When: 11<sup>th</sup> December commencing at 7:30pm

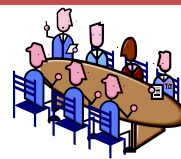
Where: Taylor Park in Grenfell

BBQ and drinks available

Glowsticks, children's DVD, Christmas address

Children's coloured cards on display as well.

Come along and enjoy the evening



## Committee Corner

The Committee are looking at the 5-year plan for the centre and asking for ways to improve the centre for all. They have recently met with staff to hear their ideas on how they think the centre could be improved. Some of the issues discussed included obtaining more resources for the children and improvements to the playground facilities. We would welcome any suggestions or ideas from parents on ways they think the centre could be improved. Feel free to talk to anyone on the committee or email Sharon on [Sharon@grenfellpreschool.com.au](mailto:Sharon@grenfellpreschool.com.au)

## The Grenfell Outreach Service of the Cowra Neighbourhood Centre

Would like to invite the people of the Weddin Shire to our Community Organisations, Groups and Services Expo

Venue: Uniting Church Hall

Time: 10am - 12 noon

Date: Wednesday 30th November 2011

Come and find out what is available for you and your family in our Community.

Morning Tea Provided.

Contact Rebecca for more information on  
0447 147 109 or email

[grenfelleinc@westserv.net.au](mailto:grenfelleinc@westserv.net.au)

Contact us: ☒ 35 Forbes Street

(PO Box 35)

Grenfell NSW 2810

☎ 02 6343 1743 ☎ 02 6343 1304



## Dates to Remember Community Health Centre – Immunisation Clinic

3<sup>rd</sup> Wednesday of the month

### Parent/ Teacher Interviews

5<sup>th</sup> December – 9<sup>th</sup> December 2011

### End of the year concert

14<sup>th</sup> December 2011

Start 5pm at the Grenfell Bowling Club

### End of year Closure

The centre will close on Friday 23<sup>rd</sup> December and  
reopen on Monday 9<sup>th</sup> January



[mail@grenfellpreschool.com.au](mailto:mail@grenfellpreschool.com.au)